

**T H E**  
**Orpheum**<sup>®</sup>  
**T H E A T R E**  
**LOS ANGELES**

**ADDRESSES AND TELEPHONE NUMBERS**

**Building Address:**  
 842 S. Broadway  
 Los Angeles, CA 90014

**Mailing Address:**  
 P.O. Box 55047  
 Los Angeles, CA 90055

Main Telephone: (877) 677-4386  
 Main Office Fax: (213) 622-1939

Web Site: [www.laorpheum.com](http://www.laorpheum.com)  
 E-mail: [backstage@laorpheum.com](mailto:backstage@laorpheum.com)

**THEATRE STAFF**

**BOX OFFICE**

CEO	Steve Needleman
Chief Financial Officer	Mark Cohen
General Manager	Ed Kelsey
Assistant GM	Christian Andrade
Events Coordinator	Deborah Stussman

Hard Ticket Box Office  
 Outside Ticket Agency  
 Ticketmaster (213) 381-2000

**SEATING CAPACITY**

<b>Fixed Seats:</b>	Orchestra	1,019
	Mezzanine	146
	Balcony	781
	Boxes	30
	<b>Subtotal</b>	<b>1,976</b>

STAGE HOUSE			BACKSTAGE																																												
<p><b>FLY SYSTEM</b>  <b>House Curtain</b>            Front curtain operates as manual fly from SL fly rail            Screen curtain operates as electric traveler SL deck  <b>Rigging System</b>            Type: Single Purchase Counterweight            Weight: 4,500 lb. available            Line Sets: 20 sets at 6-24 in. o/c with 4 lift lines per set            Arbors: 750 lb. capacity            House Pipes: 52 ft. long with 58 ft. of travel from deck            Line sets are not moveable            Block and Falls available: 3:2 (1)            No spot wheels or hemp available</p> <p><b>PERMANENT INSTALLATIONS</b>  <b>Over Stage</b> (all dimensions are from smoke pocket)            Movie Screen (1) at 6'-0"            Travelers (1) at 4'-0"  <b>On Deck</b>            Trap (1) 2' x 2' in center of stage</p> <p><b>ORCHESTRA PIT</b>            Non-adjustable at 5 ft. below stage level            Apron overhangs US wall of pit by 2'0"            Pit has center lift            Pipe organ console in SR corner of pit (can be removed)            Pit cover available to extend stage 8 ft. x 48 ft.</p>			<p><b>LOADING</b>            Loading Door: 7' 10" high x 7' 3" wide            Trucks: Always park and unload in adjacent parking lots            Loading Dock: None; loading door at alley level</p> <p><b>WARDROBE</b>            Location: Basement            Access: Elevator SR            Facilities: Washer and dryer</p> <p><b>DRESSING ROOMS</b>            Star Room (1): Including 1 full and 1 half bath SR on 2nd floor            Small Rooms (2): (1) SR in basement (incl. toilet)            (1) SR on 3rd floor            Chorus Rooms (4): Including full bath            (3) SR in basement            (1) SR on 3rd floor            Other Rooms (1): Production office in basement SL</p> <p>Dressing room elevator requires operator</p> <p><b>STORAGE &amp; REHEARSAL AREAS</b>            Rehearsal Space: 20' x 40' located under stage            Storage Space: see rehearsal space above</p>																																												
ELECTRICS			DIMMERS & CONTROL																																												
<p><b>ROAD SERVICE POWER</b></p> <table border="1"> <thead> <tr> <th>Panel</th> <th>Phase</th> <th>Amp</th> <th>Circuit Protection</th> <th>Use</th> <th>Location</th> </tr> </thead> <tbody> <tr> <td>A</td> <td>3</td> <td>400</td> <td>fuse</td> <td>dimmers</td> <td>DSR side wall</td> </tr> <tr> <td>B</td> <td>3</td> <td>400</td> <td>fuse</td> <td>dimmers</td> <td>USR side wall</td> </tr> <tr> <td>C</td> <td>3</td> <td>400</td> <td>fuse</td> <td>dimmers</td> <td>USL back wall</td> </tr> <tr> <td>D</td> <td>3</td> <td>400</td> <td>fuse</td> <td>dimmers</td> <td>DSL under lobby</td> </tr> <tr> <td>E</td> <td>3</td> <td>60</td> <td>fuse</td> <td>motors</td> <td>SL in grid</td> </tr> <tr> <td>F</td> <td>3</td> <td>100</td> <td>fuse</td> <td>audio</td> <td>SL on back wall</td> </tr> </tbody> </table> <p><b>FRONT OF HOUSE</b>            Continuous balcony rail with 30 dimmer circuits, box booms left and right with 12 dimmer circuits each side, truss position above balcony rail with 60 dimmer circuits. All dimmer circuits patch to fly gallery above stage right.</p> <p><b>EQUIPMENT - F.O.H.</b>            50 Colortran ellipsoidals; 40 ft. pre-rig truss with 60 par cans</p> <p><b>FOLLOWSPOTS</b>            House Followspots: (2) Altman Voyager with 400 watt HTI lamp in booth            Followspot Booths: (1) booth with a maximum of (2) spots            Booth Power: Three phase, 60 amps</p>			Panel	Phase	Amp	Circuit Protection	Use	Location	A	3	400	fuse	dimmers	DSR side wall	B	3	400	fuse	dimmers	USR side wall	C	3	400	fuse	dimmers	USL back wall	D	3	400	fuse	dimmers	DSL under lobby	E	3	60	fuse	motors	SL in grid	F	3	100	fuse	audio	SL on back wall	<p><b>Dimmers</b>            3 racks of 96 Lee Colortran ENR Dimmers @ 20 amps each; input connectors are 48 @ 6-circuit Socapex on Stage Right fly gallery. Cabling to connect pre-rig trusses to dimmers included.            All front of house circuits are patchable via socapex on the fly gallery.</p> <p><b>Console</b>            ETC Express 48/96</p>		
Panel	Phase	Amp	Circuit Protection	Use	Location																																										
A	3	400	fuse	dimmers	DSR side wall																																										
B	3	400	fuse	dimmers	USR side wall																																										
C	3	400	fuse	dimmers	USL back wall																																										
D	3	400	fuse	dimmers	DSL under lobby																																										
E	3	60	fuse	motors	SL in grid																																										
F	3	100	fuse	audio	SL on back wall																																										

<b>SOFT GOODS</b>	<b>PORTABLE STAGING</b>
<p><b>DRAPES</b>  <b>House Curtain</b>  Red 25 oz. velour with gold fringe at bottom  100% fullness, unlined  2 panels @ 30'h x 27" w  <b>Screen Curtain</b>  Tan plush velour with blue border near bottom  50% fullness, unlined  2 panels @ 25'h x 27" w</p> <p>Other vintage drapes available for rental</p> <p><b>LEGS AND BORDERS</b>  <b>Legs</b>  Black 25 oz. velour, no fullness  4 pairs @ 30'h x 15'w  <b>Borders</b>  Black 25 oz. velour, no fullness  4 @ 12'h x 60'w</p> <p><b>BACKDROPS</b>  White seamless muslin cyc, 30'h x 54' w  Black 25 oz. velour, no fullness, 2 pc 30'h x 27' w  Black bobbinet scrim 30'h x 50' w</p>	<p><b>PLATFORMS</b>  18 Wenger Versalite platforms @ 4' x 8' with natural (tan) color surface - require 6 legs each</p> <p><b>LEGS</b>  96 @ 8"  96 @ 16"  96 @ 24"  96 @ 32"</p> <p><b>STAIRS</b>  (2) 4-step articulating stairway for 16 to 32" stage heights</p> <p><b>STORAGE</b>  2 rolling storage carts with a capacity of 8 units each</p>
<b>VIDEO</b>	<b>DATA/TELECOM</b>
<p><b>MONITORS</b>  No monitors available</p> <p><b>SWITCHING</b>  Video patch bay in stage basement</p> <p><b>INPUTS/OUTPUTS</b>  Distributed throughout the house, stage and offices</p>	<p><b>PHONE LINES</b>  5 incoming SBC lines available at an additional charge. Up to 50 additional lines can be activated through SBC as needed. Can be accessed at the second floor offices or the basement under the stage.</p> <p><b>DATA LINES</b>  Theatre has a DSL line with a four-port router. User must have network card installed on their PC. Data lines can be patched to many locations in the theatre. Other data lines can be ordered from SBC with advance notice.</p>
<b>LABOR AND RENTALS</b>	<p><b>SWITCHING</b>  Phone and data lines are terminated in patch bays at three locations – under stage, second floor offices and basement lobby. From there they can be patched to locations throughout the theatre.</p> <p><b>INPUTS/OUTPUTS</b>  Panels with up to 4 phone and 4 data lines (RJ45) are available at various locations in the lobbies, offices, stage and dressing rooms.</p>
<p>Stage labor and tech rentals normally provided by:  SAS  Owner: Miles Williams  Phone : (213) 842-8535</p>	

FILM PROJECTION	FILM SOUND
<p><b>Projectors</b></p> <p>(2) Simplex XL 35 MM with 4,200 watt Xenon lamps and XELamp 8506 Power supply. Simplex 5-star sound mechanism with RSTR2000 LED and BACP reverse scanner; Dolby digital 701 sound heads</p> <p>(1) Norelco 16MM Type LCB 0016/16 with Strong SuperLume-X lamp house with 2000 watt xenon bulb.</p> <p><b>Processing</b></p> <p>(1) Ultra Stereo JS205/295 Stereo Processor</p> <p>(1) Dolby DA 20 Digital Sound Processor</p> <p>(1) Tascam CD-A500 CD and cassette player for non-sync</p> <p><b>Interlock</b></p> <p>(2) Westrex RA1728 35MM dubbers for synchronous double system interlock to 1, 3, 4 or 6 track 35mm mag film with Dolby A or SR. The interlock system can also generate time code for double system digital playback. The interlocked machine can be 1, 3, 4 or 6 discrete or 2:3 or 2:4.</p> <p><b>Screen</b></p> <p>Hurley seamed, perforated screen 22' x 44'</p> <p><b>Masking</b></p> <p>Top and bottom masking fixed on screen frame to an opening of 19'3" top to bottom. Side masking is acoustically transparent black drape on screen frame, adjustable by motor, with the following presets:</p> <ul style="list-style-type: none"> <li>• 1 (cinemascope 2.35:1) 43 ft side to side</li> <li>• 2 (standard 1.85:1) 35 ft side to side</li> <li>• 3 (video 1.66:1) 31.5 ft side to side</li> <li>• 4 (silent 1.33:1) 25 ft side to side</li> </ul> <p>Side masking is infinitely adjustable to manual settings anywhere between #1 and #4</p> <p><b>Throw from Projector to Screen</b></p> <p>110 ft at a downward angle of approximately 22 degrees</p>	<p><b>SURROUND SOUND</b></p> <p><b>Speakers</b></p> <p>(4) EV FR12-2B on sides of main floor</p> <p>(8) JBL 8330 on back of main floor and front of balcony</p> <p>(4) JBL 8340A on sides of balcony</p> <p>(4) JBL 8330 on back of balcony</p> <p><b>Amps</b></p> <p>(5) QSC Model 1700</p> <p>All surround speakers home run individually to rack in projection booth</p> <p><b>SCREEN SOUND</b></p> <p><b>Speakers</b></p> <p>Left: (2) JBL 4648-8 low/mid stacked vertically with (1) JBL 2450J horn on top</p> <p>Center: (2) JBL 4648A-8 low/mid stacked vertically with (1) JBL 2450J horn on top</p> <p>Right: (2) JBL 4648-8 low/mid stacked vertically with (1) JBL 2450J horn on top</p> <p>Sub: (4) Cerwin-Vega SW18 stacked 2 over 2 in a cube formation</p> <p><b>Processing:</b></p> <p>(2) BGW Model 250D Amps</p> <p>(1) BGW Model 250B Amp</p> <p>(3) QSC PLX 3402 Amps</p> <p>(1) JBL Urei 6200 Amp</p> <p>(2) White 4003 EQ</p> <p>(1) White 4400 EQ</p> <p>(1) Rane AC23 Active Crossover</p> <p>(1) Rane AC22 Active Crossover</p> <p>All amps, processing and speakers are available in a patch bay in the amp room under the stage</p>

## LIVE SOUND

### CONSOLE

- Yamaha M7CL – Digital console (no outboard processing or effects)  
48 mono inputs, 4 stereo inputs, 16 outputs, on-board Yamaha processing, EQ and effects

### SPEAKERS

- (16) McCauley MLA3 Monarc 3-way Line Arrays (8 left, 8 right flown)  
Powered by 4 Lab Gruppen FP3400 / 12 Lab Gruppen FP6400
- (8) McCauley CSM88 (double 18" subs / 4 left, 4 right ground stack in orch pit)  
Powered by 4 QSC RMX-5050
- (8) EAW UB82 Front Fills / Under balcony fills - powered by 2 EV Q66 amps.

### STAGE AUDIO / MONITORS

- (6) Mackie SRM 450 powered speakers for monitors (can be mixed from FOH – NO monitor console)
- Microphone / Stand / Cable package in house – enough for 1 typical band (NO wireless mics)

### COMMUNICATIONS

- House intercom system with inputs at various locations, wired for two channels.
- Clear-Com base station and 5 single-channel headsets/belt packs as well as 4 wireless Telex headsets.

### ROAD CONSOLE PLACEMENT

- Located in rear of orchestra. Cable run from stage is 120 ft.

### SENDS/RETURNS TO CONSOLE FROM STAGE

- 58 Channel Whirlwind isolated splitter – normally located Stage Left – 48 sends / 10 returns  
Whirlwind W4 Monitor Split Out
- Whirlwind W4 58 channel FOH snake 150'
- Whirlwind W2 16 channel return snake 150'
- Whirlwind Sub-snakes with fan-outs
  - 1 - 50' - 24 input / 4 return XLR
  - 1 - 50' - 16 input / 4 return XLR
  - 1 - 50' - 8 input XLR

## MARQUEE

Marquee reader-board dimensions:

North Side:

242 3/4 inches wide      58 1/4 inches high  
(this side can generally accept 4 rows of 35 letters each row of the standard 8-inch Fast-Trac format)

Center Side:

173 3/4 inches wide      58 1/4 inches high  
(this side can generally accept 4 rows of 26 letters each row of the standard 8-inch Fast-Trac format)

South Side:

243 1/4 inches wide      58 1/2 inches high  
(this side can generally accept 4 rows of 35 letters each row of the standard 8-inch Fast-Trac format)

NOTE: The marquee has three reader boards (North Side, Center Side, and South Side) that has milk-colored translucent panels to install lettering to advertise event information. The listed sizes of these panels include the 2-inch metal trim on the top, bottom, and sides. For the actual illuminated area subtract 4-inches from the width and height dimensions.

## COUNTERWEIGHT SYSTEM

Line #	Distance from Smoke Pocket	Arbor Capacity	Notes
B	-1' 8"	450 lb.	permanently used for grand teaser above front of proscenium; 5 lift lines; wire-guide arbor is on SR gallery
1	1'-0"	750 lb.	normally used for red main drape; can manually raise and lower only; this is the first line set behind the smoke pocket
2	1'-6"	750 lb.	
3	2'-0"	750 lb.	
5	3'-0"	750 lb.	
7	4'-0"	750 lb.	permanently used for screen curtain and motorized traveler track; curtain can travel by motor or fly manually
8	6'-0"	750 lb.	permanently used for movie screen
9	7'-0"	750 lb.	
10	8'-6"	750 lb.	
13	10'-0"	750 lb.	
16	11'-6"	750 lb.	
19	13'-0"	750 lb.	
22	14'-6"	750 lb.	
25	16'-6"	750 lb.	
27	17'-6"	750 lb.	
29	19'-0"	750 lb.	
32	21'-0"	750 lb.	
36	23'-0"	750 lb.	
40	25'-0"	750 lb.	
42	26'-0"	750 lb.	
45	27'-6"	750 lb.	

## **PRODUCTION GUIDELINES**

### **PARKING**

All parking lots adjacent to the theatre are separately operated. Arrangements for rental and use of these lots can be made with their respective operators or can be included in the rental contract for a fixed charge.

Suggested parking for production and catering trucks is the two lots directly behind the theatre on Spring Street (lots A and B on the parking map). Contact the theatre or the lot operators for more information.

The alley behind the theatre is privately owned and is in use by the garment businesses in the adjacent buildings. No production vehicles may park in the alley. Any cables from generators or trucks in the parking lots must be routed under the alley using the 12" diameter permanent tube or at least 16 ft. overhead using scaffolding and/or trussing.

### **ELECTRICAL**

Productions are free to use the existing house lighting and electrical outlets. Any additional power required can be supplied by using one or more of the four theater disconnects at an additional charge. Generators should be located in the lot directly behind the lobby door on Spring Street (lot B on the parking map). There is a run of 4/0 cable already in place in a tunnel under the alley. This will require turn-arounds as it is oriented to feed power to the parking lot. Any additional cables must be routed at least 16 ft. above the alley.

Cables may enter the building through the openings in the 'animal room' near the stage door. However, any cables entering through the ground-level doors must be disconnected each night so that the doors may be completely closed. There is a separate 12" pipe for routing camera cables into the plenum space under the seats.

### **STAGE EQUIPMENT AND TECHNICIANS**

Stage technicians are supplied by SAS – contact Miles Williams at (213) 842-8535. SAS can supply lighting techs, audio techs, stagehands, loaders, lighting designers, follow-spot operators and other technical personnel. If any in-house lighting and sound equipment is used SAS personnel must operate that equipment. If outside equipment is used, a minimum crew of three department heads from SAS – lighting, sound and stage is still required; there may also be labor charges for removing and restoring house equipment.

### **RIGGING**

Because of the risk of accidental injury, only SAS personnel or qualified and insured riggers are allowed to operate the stage counterweight system. Any temporary rigging must be installed by qualified and insured riggers. Proof of insurance may be required. SAS can supply these riggers through a qualified and insured rigging company. Temporary rigging may require an engineer's approval based on the weight and/or the number of points being hung.

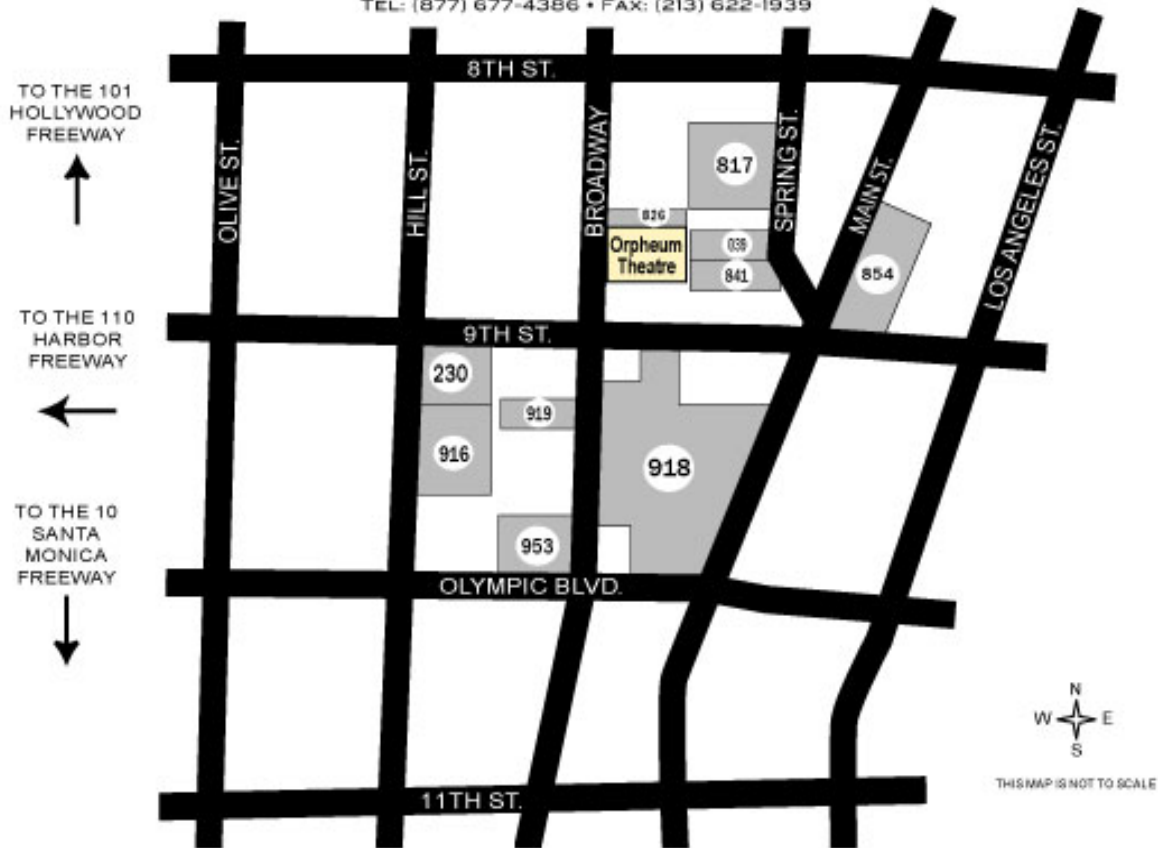
### **MISCELLANEOUS**

- No holes may be made in the walls or ceiling of the lobby or auditorium, or the stage floor.
- The first five rows of seats in the orchestra section are removable in sets of 2 or 3. There is also a section of seats in aisle 3 that can be removed for a camera position. No other seats are removable. If time permits, the removal can be done beforehand by SAS staff for a charge. Otherwise the time must be budgeted into the load-in. The seats in aisle 3 are removed by a professional seating company and must be contracted for in advance.
- The theatre has heating, ventilation and air conditioning. Air conditioning is normally supplied without charge on filming or event days only.
- Lobby and backstage manual elevators are manually operated, and must be operated by one of the theatre staff.
- Layout board must be used to cover all patterned carpet in the lobbies during location filming or large event load-ins and load-outs.

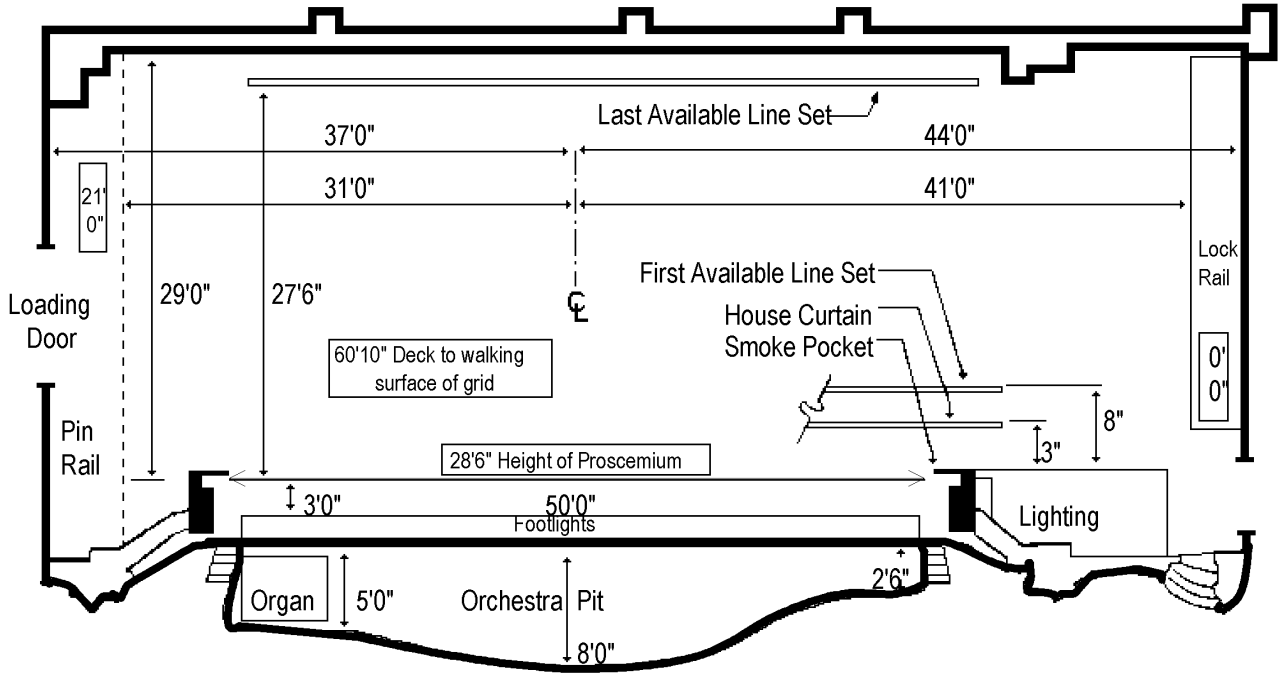
# PUBLIC PARKING LOTS IN THE IMMEDIATE VICINITY OF



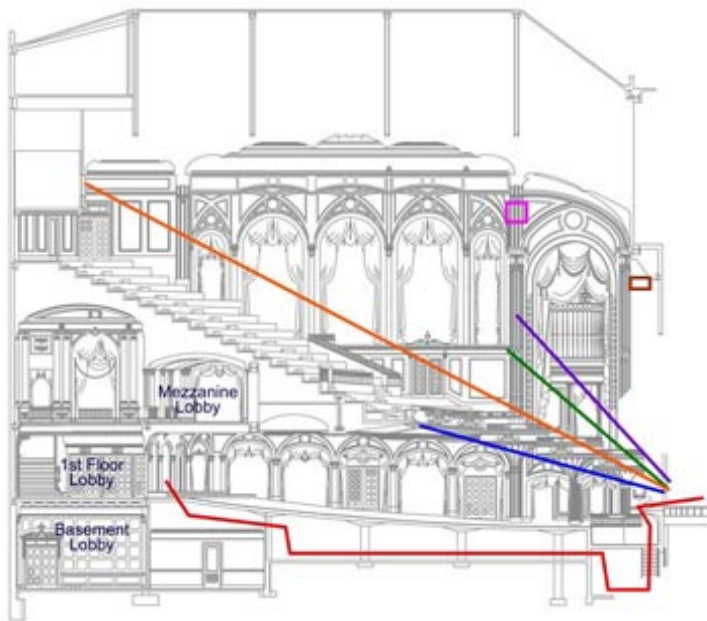
842 S. BROADWAY, LOS ANGELES CA 90014  
TEL: (877) 677-4386 • FAX: (213) 622-1939



Joe's Auto Parks (213) 629-3263	<b>817</b> S. Spring St.	95 Spaces + 95 Stacked	200' x 155'
Joe's Auto Parks	<b>839</b> S. Spring St.	37 Spaces + 18 Stacked	70' x 155'
Joe's Auto Parks	<b>841</b> S. Spring St.	34 Spaces + 68 Stacked	120' x 155'
Joe's Auto Parks	<b>826</b> S. Broadway	26 Spaces	50' x 148'
Joe's Auto Parks	<b>918</b> S. Broadway	420 Spaces	
Joe's Auto Parks	<b>919</b> S. Broadway	37 Spaces	
Joe's Auto Parks	<b>953</b> S. Broadway	67 Spaces + Stacking	
Athena Parking (213) 622-6780	<b>230</b> W. 9th St. (Parking Structure)	300 Spaces	
Joe's Auto Parks	<b>916</b> S. Hill St.	101 Spaces + Stacking	
Joe's Auto Parks	<b>854</b> S. Main St.		



**STAGE DIAGRAM**  
(not to scale)



FOH motor points  
54 ft. above orchestra floor  
24 ft. from the front of stage

Proscenium motor points  
36 ft. above stage floor

Distance from FOH truss to front of stage with truss at 35 ft. above orchestra floor  
37 ft.

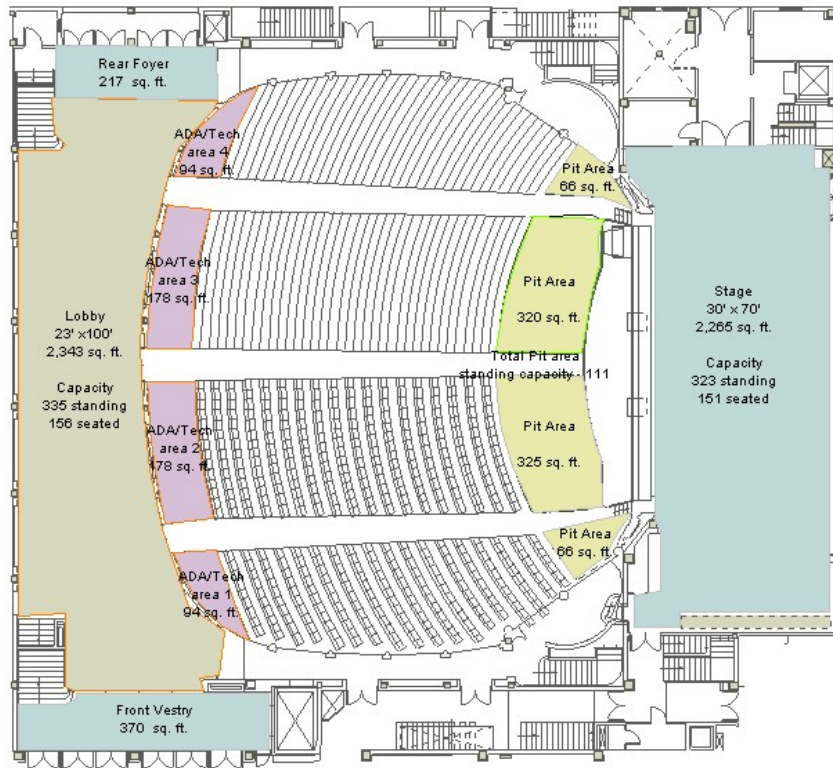
Distance from side boom position to front of stage  
55 ft.

Distance from front of projection booth to front of stage  
110 ft.

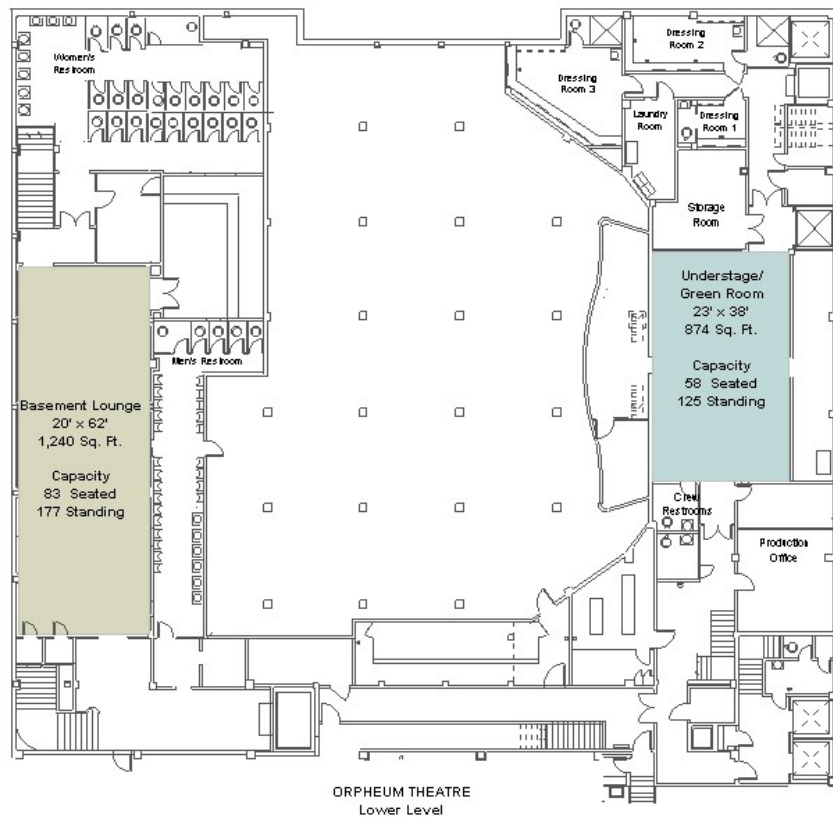
Distance from front of balcony to front of stage  
42 ft.

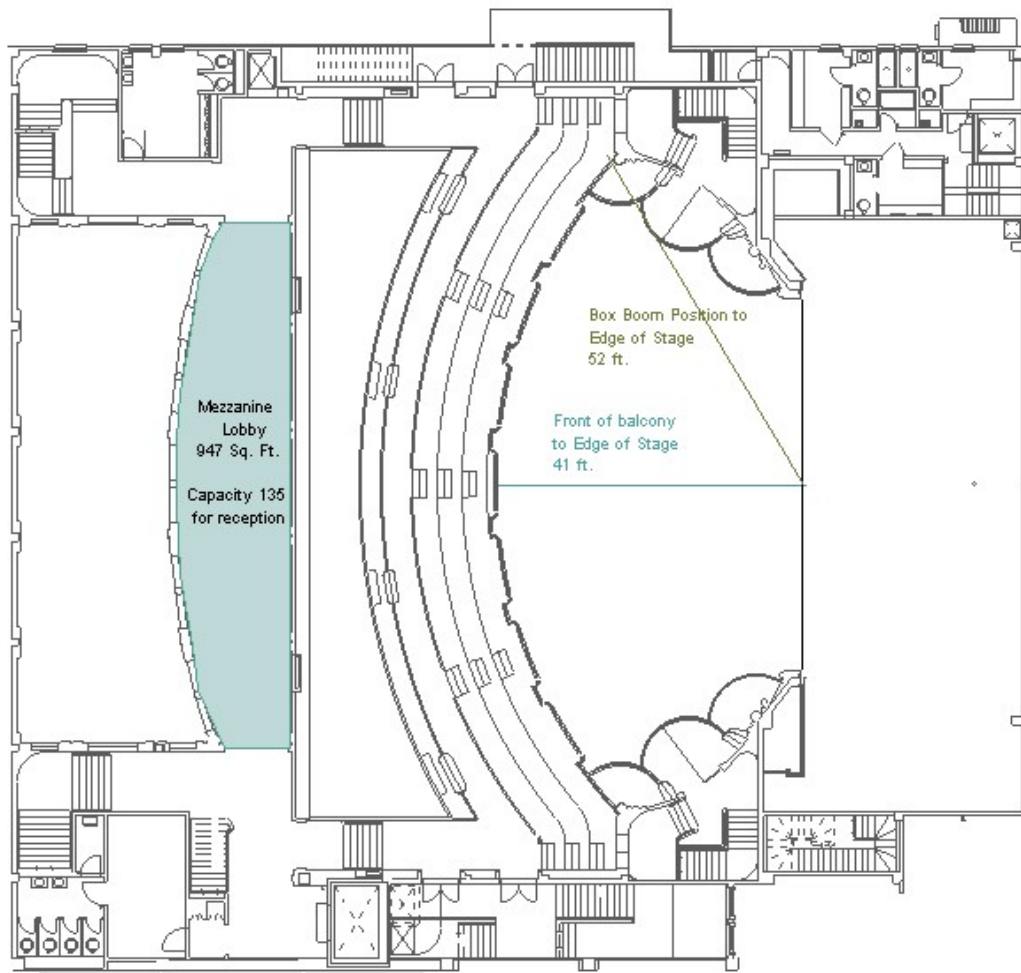
Distance from rear tech area to front of stage for cable run  
118 ft.

## THE ORPHEUM THEATRE Section View

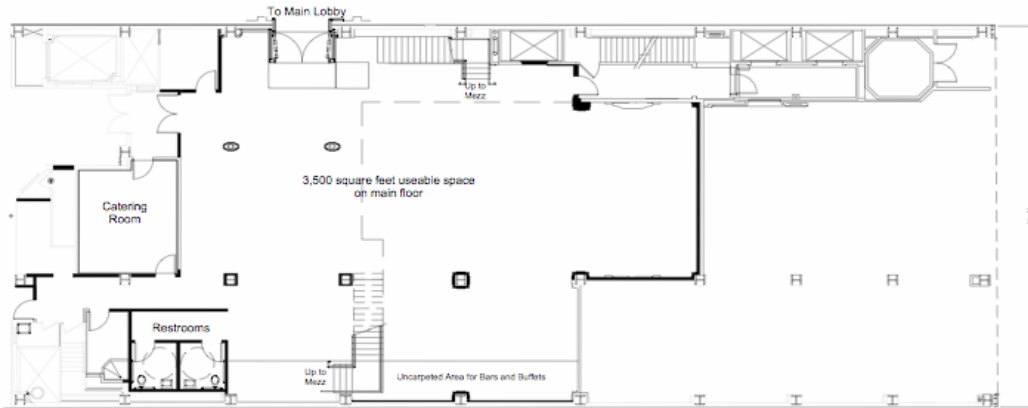


ORPHEUM THEATRE  
First Floor

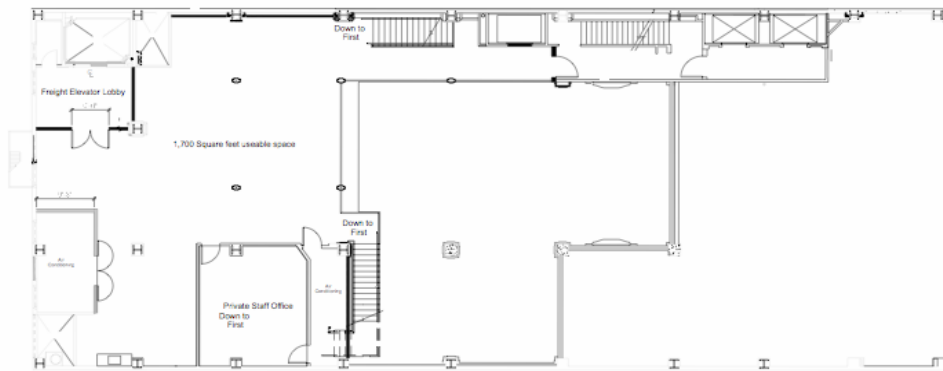




ORPHEUM THEATRE, Los Angeles  
Mezzanine Floor



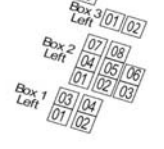
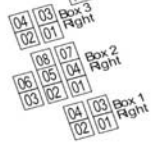
Orpheum Theater  
Los Angeles  
North Hall  
First Floor



Orpheum Theater  
Los Angeles  
North Hall  
Mezzanine Level

U	201	202	203	204	205	206	207	208	209	210	211	212	213	U	101	103	105	107	109	111	113	115	117	119	121	123	U	125	127	129	131	133	135
T	128	124	120	118	116	114	112	110	108	106	104	102	T	101	103	105	107	109	111	113	115	117	119	121	123	T	125	127	129	131	133	135	
S	138	136	134	132	130	128	126	S	101	103	105	107	109	111	113	115	117	119	121	123	S	125	127	129	131	133	135						
R	124	122	120	118	116	114	112	110	108	106	104	102	R	101	103	105	107	109	111	113	115	117	119	121	123	R	125	127	129	131	133	135	
Q	124	122	120	118	116	114	112	110	108	106	104	102	Q	101	103	105	107	109	111	113	115	117	119	121	123	Q	125	127	129	131	133	135	
P	124	122	120	118	116	114	112	110	108	106	104	102	P	101	103	105	107	109	111	113	115	117	119	121	123	P	125	127	129	131	133	135	
O	124	122	120	118	116	114	112	110	108	106	104	102	O	101	103	105	107	109	111	113	115	117	119	121	123	O	125	127	129	131	133	135	
N	124	122	120	118	116	114	112	110	108	106	104	102	N	101	103	105	107	109	111	113	115	117	119	121	123	N	125	127	129	131	133	135	
M	124	122	120	118	116	114	112	110	108	106	104	102	M	101	103	105	107	109	111	113	115	117	119	121	123	M	125	127	129	131	133	135	
L	124	122	120	118	116	114	112	110	108	106	104	102	L	101	103	105	107	109	111	113	115	117	119	121	123	L	125	127	129	131	133	135	
K	124	122	120	118	116	114	112	110	108	106	104	102	K	101	103	105	107	109	111	113	115	117	119	121	123	K	125	127	129	131	133	135	
J	124	122	120	118	116	114	112	110	108	106	104	102	J	101	103	105	107	109	111	113	115	117	119	121	123	J	125	127	129	131	133	135	
H	124	122	120	118	116	114	112	110	108	106	104	102	H	101	103	105	107	109	111	113	115	117	119	121	123	H	125	127	129	131	133	135	
G	124	122	120	118	116	114	112	110	108	106	104	102	G	101	103	105	107	109	111	113	115	117	119	121	123	G	125	127	129	131	133	135	
F	124	122	120	118	116	114	112	110	108	106	104	102	F	101	103	105	107	109	111	113	115	117	119	121	123	F	125	127	129	131	133	135	
E	124	122	120	118	116	114	112	110	108	106	104	102	E	101	103	105	107	109	111	113	115	117	119	121	123	E	125	127	129	131	133	135	
D	124	122	120	118	116	114	112	110	108	106	104	102	D	101	103	105	107	109	111	113	115	117	119	121	123	D	125	127	129	131	133	135	
C	126	124	122	120	118	116	114	112	110	108	106	104	102	C	101	103	105	107	109	111	113	115	117	119	121	123	C	127	129	131	133	135	137
B	124	122	120	118	116	114	112	110	108	106	104	102	B	101	103	105	107	109	111	113	115	117	119	121	123	B	125	127	129	131	133	135	
A	122	120	118	116	114	112	110	108	106	104	102	A	101	103	105	107	109	111	113	115	117	119	121	123	A	123	125	127	129	131	133		

MEZZANINE (ROWS A - C), BOXES & BALCONY (ROWS D - U)



Z	26	24	22	20	18	16	14	12	10	08	06	04	02	Z	27	29	31	33	35	37	39	41	43	45	47
Y	26	24	22	20	18	16	14	12	10	08	06	04	02	Y	27	29	31	33	35	37	39	41	43	45	47
X	26	24	22	20	18	16	14	12	10	08	06	04	02	X	27	29	31	33	35	37	39	41	43	45	47
W	26	24	22	20	18	16	14	12	10	08	06	04	02	W	27	29	31	33	35	37	39	41	43	45	47
V	26	24	22	20	18	16	14	12	10	08	06	04	02	V	27	29	31	33	35	37	39	41	43	45	47
U	26	24	22	20	18	16	14	12	10	08	06	04	02	U	27	29	31	33	35	37	39	41	43	45	47
T	26	24	22	20	18	16	14	12	10	08	06	04	02	T	27	29	31	33	35	37	39	41	43	45	47
S	26	24	22	20	18	16	14	12	10	08	06	04	02	S	27	29	31	33	35	37	39	41	43	45	47
R	26	24	22	20	18	16	14	12	10	08	06	04	02	R	27	29	31	33	35	37	39	41	43	45	47
Q	26	24	22	20	18	16	14	12	10	08	06	04	02	Q	27	29	31	33	35	37	39	41	43	45	47
P	26	24	22	20	18	16	14	12	10	08	06	04	02	P	27	29	31	33	35	37	39	41	43	45	47
O	26	24	22	20	18	16	14	12	10	08	06	04	02	O	27	29	31	33	35	37	39	41	43	45	47
N	26	24	22	20	18	16	14	12	10	08	06	04	02	N	27	29	31	33	35	37	39	41	43	45	47
M	26	24	22	20	18	16	14	12	10	08	06	04	02	M	27	29	31	33	35	37	39	41	43	45	47
L	26	24	22	20	18	16	14	12	10	08	06	04	02	L	27	29	31	33	35	37	39	41	43	45	47
K	26	24	22	20	18	16	14	12	10	08	06	04	02	K	27	29	31	33	35	37	39	41	43	45	47
J	26	24	22	20	18	16	14	12	10	08	06	04	02	J	27	29	31	33	35	37	39	41	43	45	47
H	26	24	22	20	18	16	14	12	10	08	06	04	02	H	27	29	31	33	35	37	39	41	43	45	47
G	26	24	22	20	18	16	14	12	10	08	06	04	02	G	27	29	31	33	35	37	39	41	43	45	47
F	26	24	22	20	18	16	14	12	10	08	06	04	02	F	27	29	31	33	35	37	39	41	43	45	47
E	26	24	22	20	18	16	14	12	10	08	06	04	02	E	27	29	31	33	35	37	39	41	43	45	47
D	26	24	22	20	18	16	14	12	10	08	06	04	02	D	27	29	31	33	35	37	39	41	43	45	47
C	26	24	22	20	18	16	14	12	10	08	06	04	02	C	27	29	31	33	35	37	39	41	43	45	47
B	26	24	22	20	18	16	14	12	10	08	06	04	02	B	27	29	31	33	35	37	39	41	43	45	47
A	24	22	20	18	16	14	12	10	08	06	04	02	A	27	29	31	33	35	37	39	41	43	45	47	

ORCHESTRA LEVEL

THE ORPHEUM THEATRE - LOS ANGELES